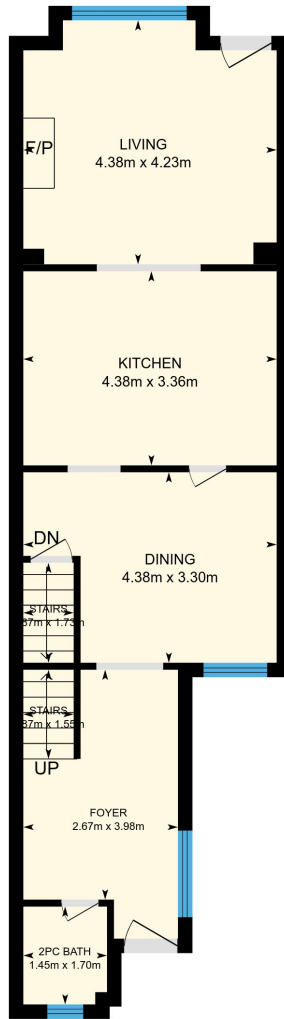
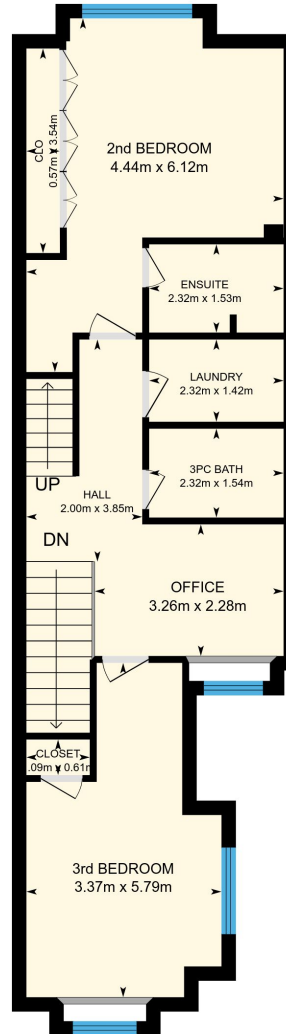


# 304 Wellesley St E, Toronto, ON

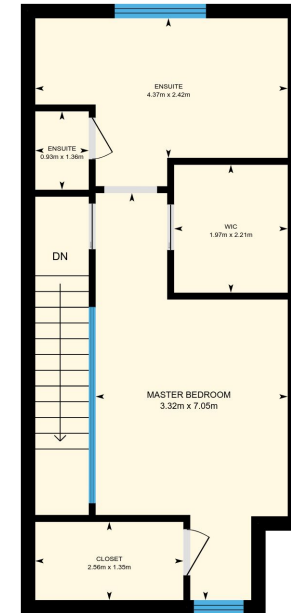
Total Exterior Area Above Grade 200.4 m<sup>2</sup>



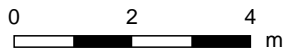
**Main floor**  
Exterior Area 73.0 m<sup>2</sup>



**2nd floor**  
Exterior Area 76.9 m<sup>2</sup>

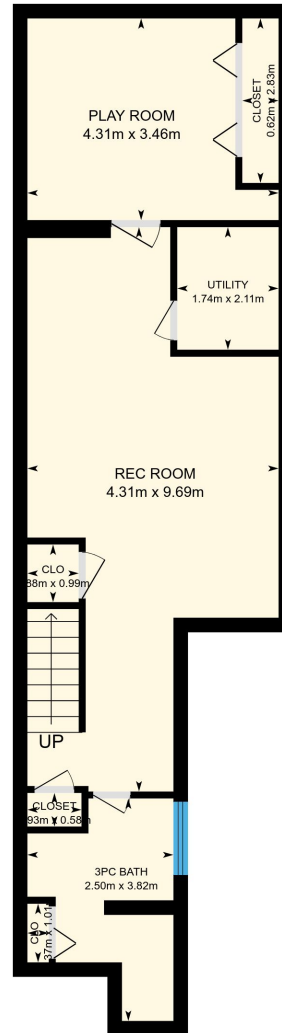


**3rd floor**  
Exterior Area 50.5 m<sup>2</sup>

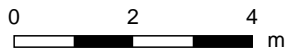


PREPARED: Oct, 2017

# 304 Wellesley St E, Toronto, ON



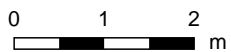
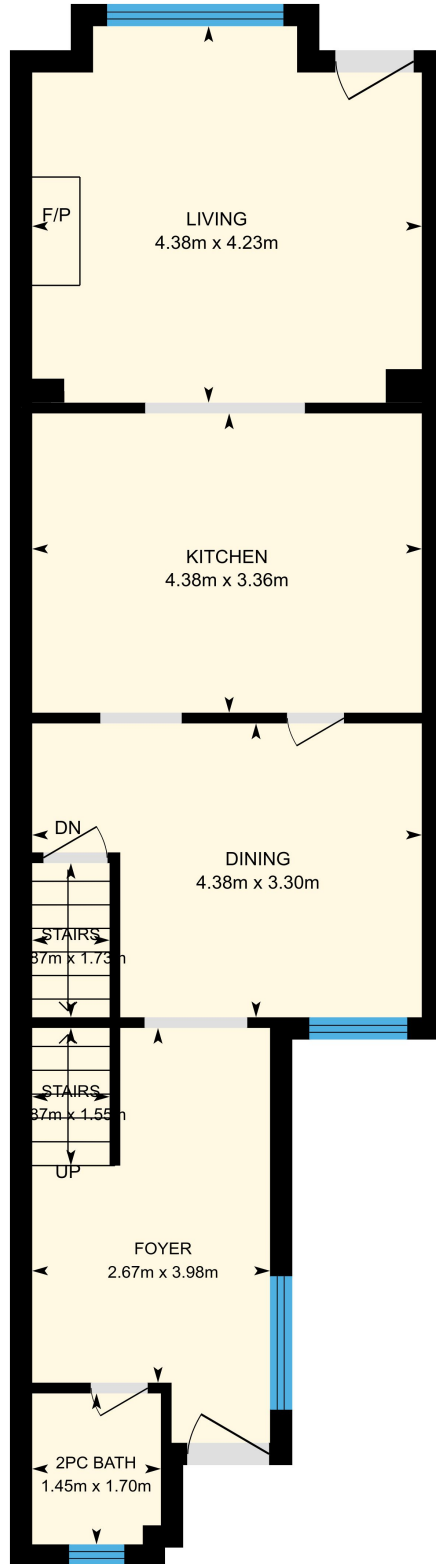
**Basement (Below Grade)**  
Exterior Area 71.0 m<sup>2</sup>



PREPARED: Oct, 2017

# 304 Wellesley St E, Toronto, ON

**Main floor** Total Exterior Area 73.0 m<sup>2</sup>  
Total Interior Area 62.0 m<sup>2</sup>

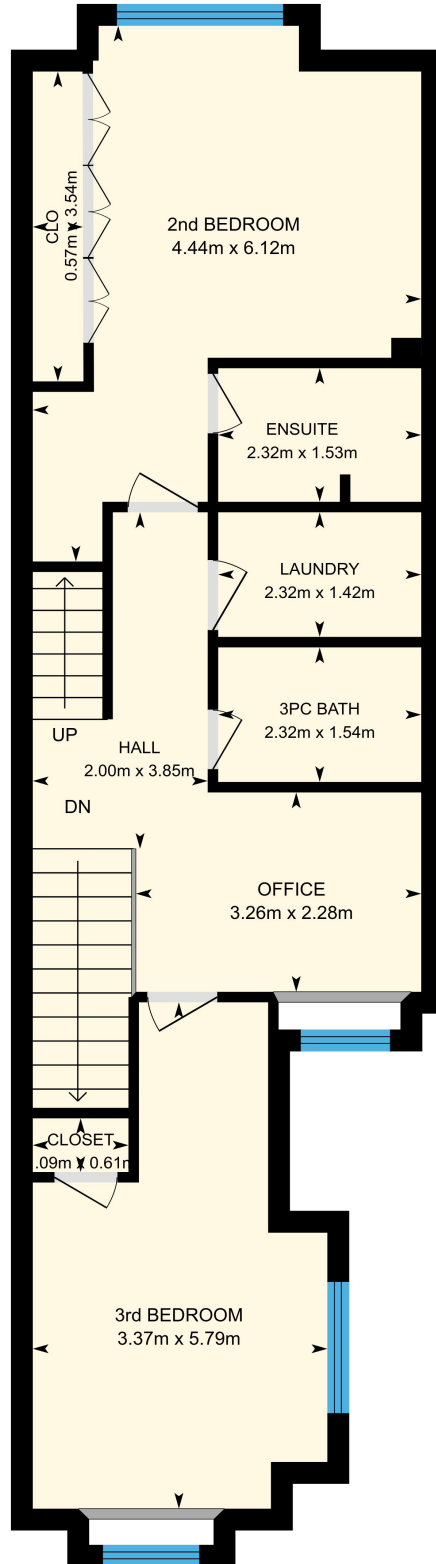


PREPARED: Oct, 2017



# 304 Wellesley St E, Toronto, ON

2nd floor Total Exterior Area 76.9 m<sup>2</sup>  
Total Interior Area 65.6 m<sup>2</sup>



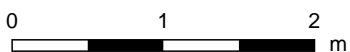
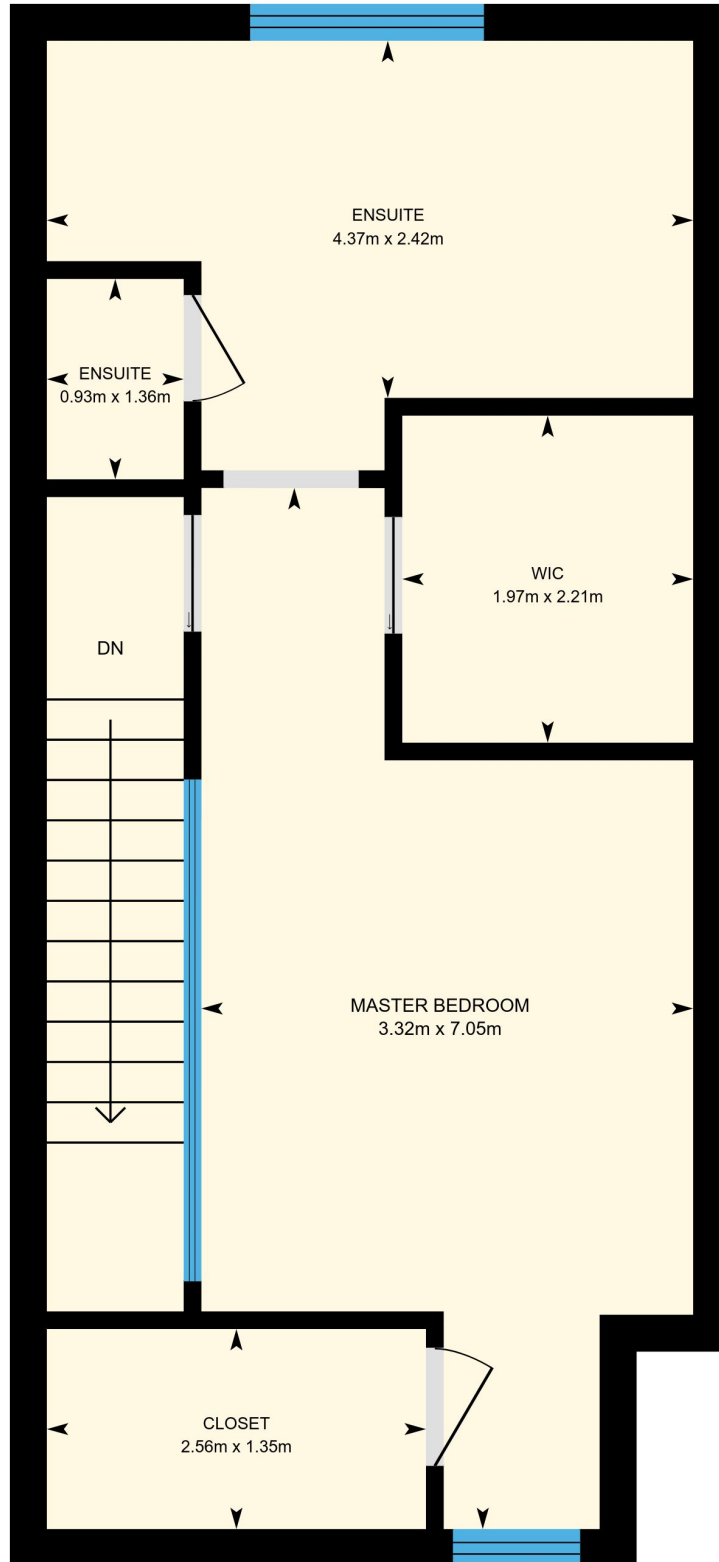
PREPARED: Oct, 2017

Colored regions are included in total floor area. All room dimensions and floor areas must be considered approximate and are subject to independent verification. For method of measurement please see <https://youriguide.com/measure/>.



# 304 Wellesley St E, Toronto, ON

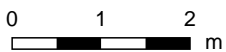
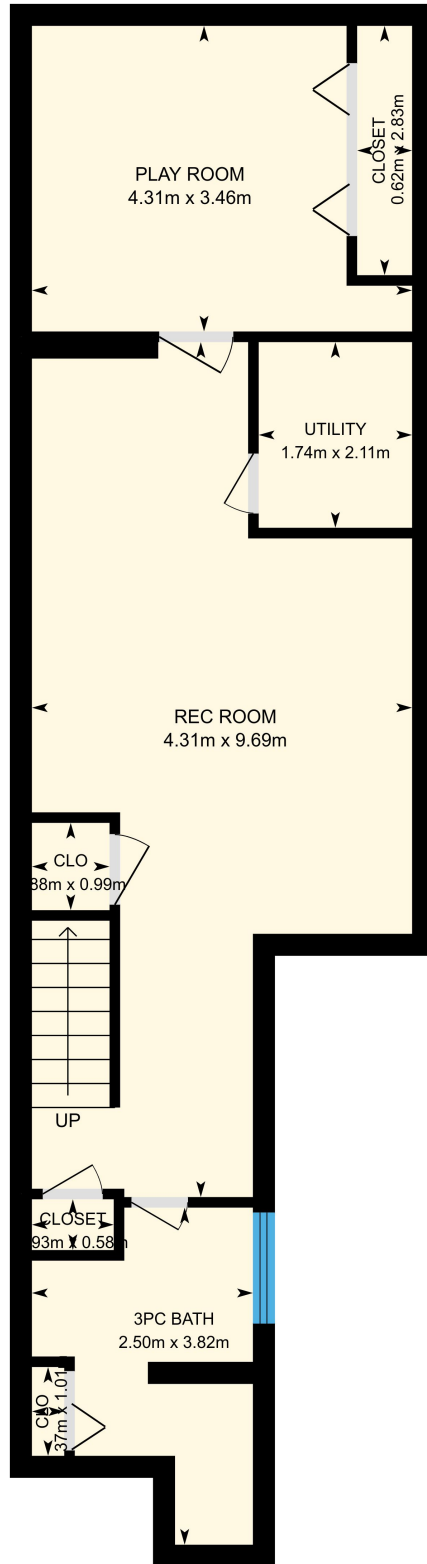
3rd floor Total Exterior Area 50.5 m<sup>2</sup>  
Total Interior Area 43.1 m<sup>2</sup>



PREPARED: Oct, 2017

# 304 Wellesley St E, Toronto, ON

**Basement** Total Exterior Area 71.0 m<sup>2</sup>  
Total Interior Area 60.0 m<sup>2</sup>



PREPARED: Oct, 2017